

Smart & Versatile ANSER HI-Pro Printhead

ANSER's Coding Technology enhances your coding accuracy and printing quality.

2-in-1 Printhead Design

HI-Pro printhead allows easy switching between 0.5" and 1" cartridge technologies with no additional printhead or software upgrade requirement. This allows users to have wider range of ink portfolio selection using just 1 printhead, while meeting variety of porous and non-porous substrate requirement.



Smart Cartridge Recognition Technology

ANSER Smart Recognition Technology, a true "Plug-N-Print" solution, helps managers reduce daily operation errors and minimize production downtime. This technology allows printhead to auto-recognize specific types of ink used, and automatically adjust the printer controller setting for best print quality and continuous print reliability.

Testing 150 Nozzles at 50% Ink Remained.



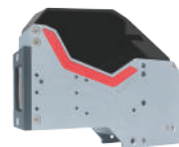
ANSER



Other Brand

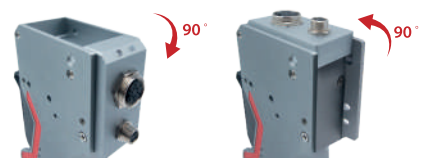
Cartridge Protection Design

HI-Pro printhead offers optional cartridge protection cover, enhancing cartridge dust-proof capability in harsh coding environments.



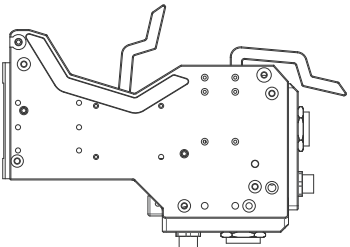
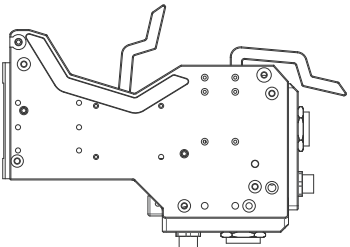
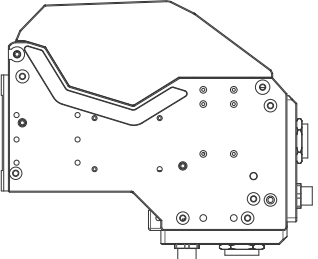
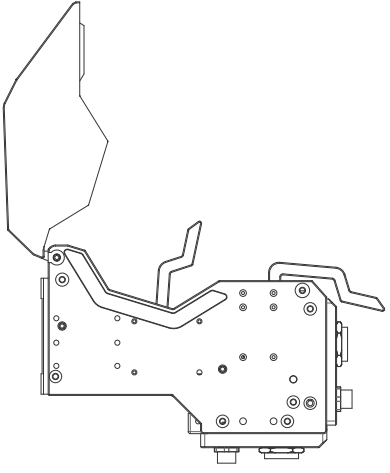
90° Adjustable I/O Panel Design

Wire management and printhead integration in tight production line and equipment can be challenging. HI-Pro printhead features 90-degree adjustable cable I/O panel (Patent Pending), allowing effortless installation in space-limited automation production area.



HI-PRO Printhead Specifications

| | | | |
|-----------------------------|---|----------------------------------|---|
| Printing Technology | High Resolution Thermal Inkjet | Operating Temperature | 0°C~40°C (32°F~104°F) |
| Print Height | HI-Pro-0.5: Single Printhead: 12.7mm (0.5 inch) Stitch Printheads: 12.7mm x 2 @ 24.75mm (0.98 inch) | Operating Humidity | 0%~90% RH, non-condensing |
| | HI-Pro-1.0: Single Printhead: 25.4mm (1.0 inch) Stitch Printheads: 25.4mm x 2 @ 48.7mm (1.92 inch) | | |
| Maximum Vertical Resolution | 600 DPI | I/O Port * M8-4 pins | NPN sensor input Encoder signal input |
| Maximum Printing Speed | 30m/min @ 600 DPI 300m/min @ 60 DPI | Printhead Cable * M16-14 pins | Standard: 2m Optional: 5m, 10m, or 15m |
| Maximum Printing Distance | 6mm | Weight | 0.55kg |

| HI-Pro Dimensions (L*W*H)(mm) | Without Dust Cover | | With Dust Cover | Open Dust Cover | |
|-------------------------------|---|---|------------------|--|---|
| | Latch switch on | Latch switch off | | Latch switch on | Latch switch off |
| |  |  | |  |  |
| I/O at back | 152.8*39.8*104.8 | 168.9*39.8*92.7 | 152.8*39.8*112.9 | 171.4*39.8*212.2 | 187.4*39.8*212.2 |
| I/O at bottom | 140.5*39.8*119.3 | 168.9*39.8*107.2 | 140.5*39.8*127.4 | 159.0*39.8*226.7 | 187.4*39.8*226.7 |



ANSER CODING INC.

(02) 2697 3488 sales@anser-coding.com

34F., No.99, Sec. 1, Xintai 5th Rd., Xizhi Dist.,
New Taipei City 221, Taiwan

Copyright © 2022.02 ANSER CODING INC. All rights reserved.

The information at hand is provided as available at the time of printing, and ANSER reserves the right to change any information without updating this publication. ANSER does not assume any responsibility for any errors or omissions in this publication.